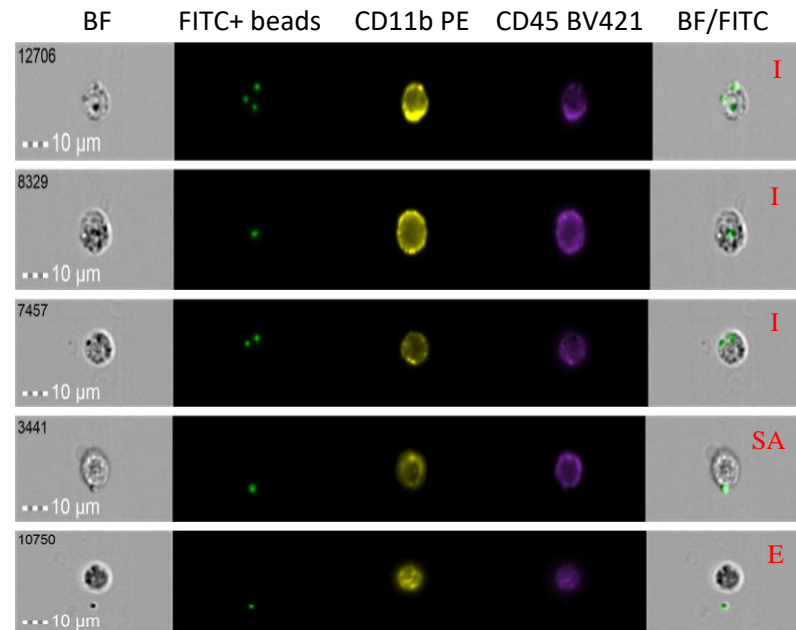
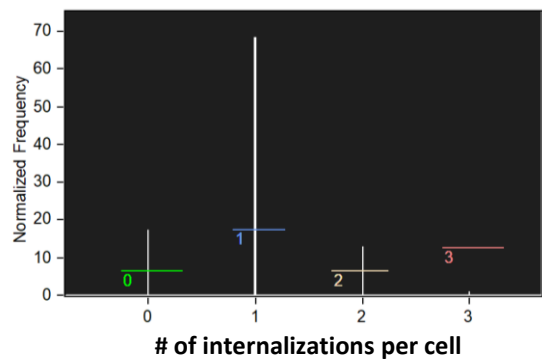


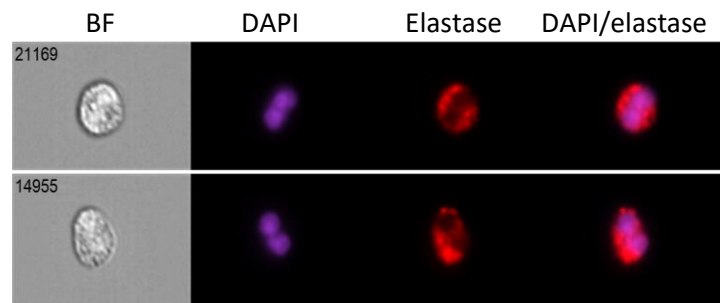
Phagocytosis & internalization



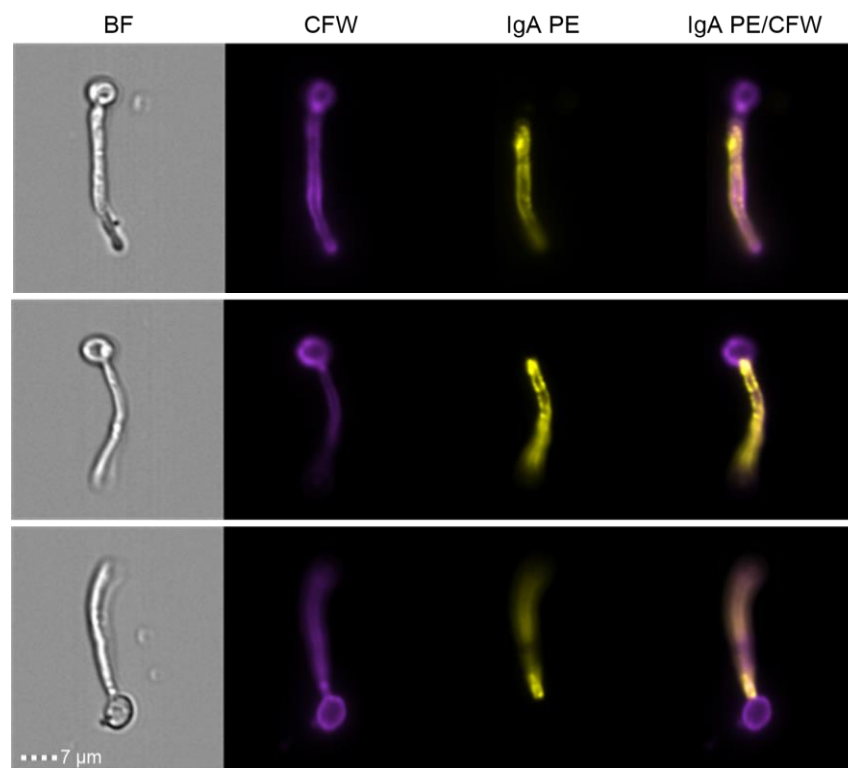
Spot counting methodology distinguishes between internal (I), surface-adhered (SA), and external (E) counts of beads, vesicles, fungi, and other materials.



Antigen localization & colocalization

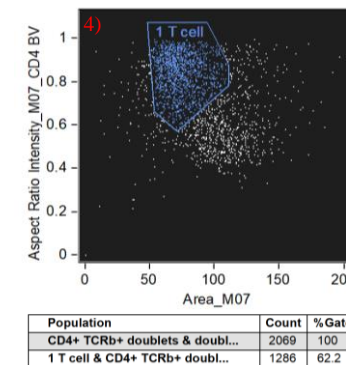
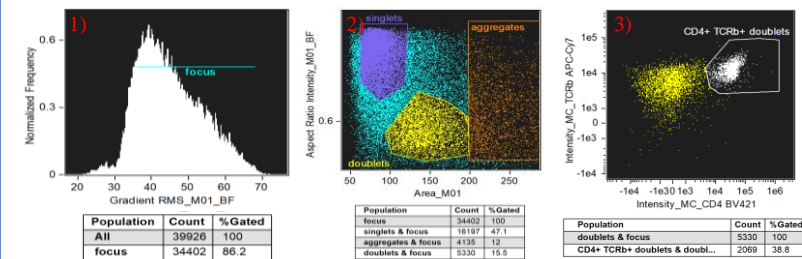
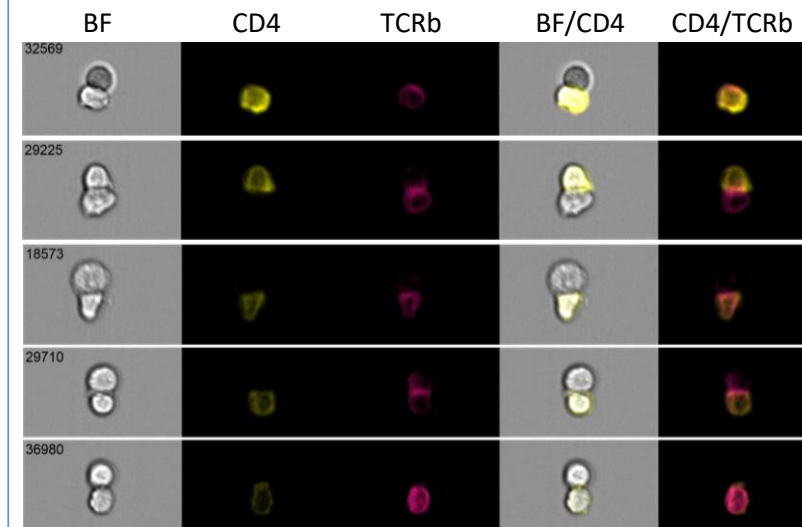


Cytoplasmic to nuclear ratio of elastase is high.



IgA localized to yeast hyphae.

Cell-cell contact & immune synapses



Gating strategy: 1) focused cells, 2) doublers based on brightfield aspect ratio and area, 3) CD4+ TCRb+, 4) doublers that have 1 CD4+ cell and 1 non-CD4 cell based on CD4 channel area and aspect ratio. CD4+/CD4+ doublers fall outside the '1 T cell' gate. Adding an antigen presenting cell (APC) marker would allow for an additional gate to ensure that the non-CD4 cell is an APC.